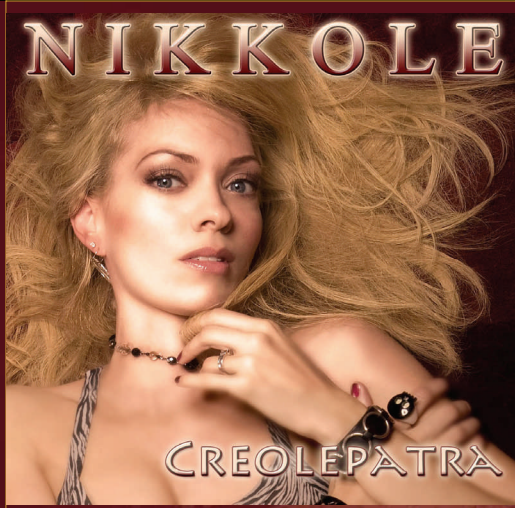


# NIKKOLE

starring as ... CREOLEPATRA



Singer / Songwriter / Producer Nikkole releases her third studio album, *Creolepatra*, on August 12, 2008. *Creolepatra's* lead-off single "E-X-OTIC" will debut on July 8, 2008 and will include an exciting new music video. The upbeat single was produced by Nikkole and Lloyd Tolbert (Anthony Hamilton, Lionel Richie, The Emotions, Brandy, Toni Braxton, TLC, Norman Brown). The new release on SE Entertainment Records contains 17 tracks, 14 full-length songs and 3 interludes all penned by the 5-octave vocalist. Coming aboard and lending their legendary Grammy award winning voices are *The Emotions* on the Interlude - "Are You Swept?". This brilliant trio worked with Nikkole on her last cd "A Girl Like Me". In addition, celebrated guitarist David T. Walker makes an appearance on the Memphis blues inspired track "Where I Was Meant To Be". *Creolepatra* is filled with an array of passion from the power ballads of "I Really Need You" and "Even On A Day Like This", to dance floor urban / hip-hop grooves like "Are You Satisfied?", "Wach-U-No", "Now Or Later" and "Feel Me". You'll find yourself reflecting during the lyrical twists of the interludes, and contemplating life's everyday lessons while vibing on cuts like... "Stressin'" and "I Can't Leave". The journey isn't complete until you're taken back in the day with the 60's slow jam throwback of "Love Was Made In Heaven", where you will be reminded of the smooth Motown sounds of *Smokey Robinson* along with a hint of the R&B Diva *Teena Marie*.

**Critics and Industry Professionals are raving about Nikkole:** ★ "Skeptics may take a look at the CD cover and dismiss Nikkole as just another pretty face, without listening to her music. That would be a mistake! For both women and men it certainly does not hurt to have the looks to go with the talent, in the entertainment industry, this lady has cracked the commercial radio market, and is in heavy demand for gigs because she is a very gifted Singer / Songwriter / Producer." *Joe Montague, Riveting Riffs Magazine* ★ "Nikkole is superb, what an amazing talent. We at NIU FM are pleased to add such a dynamic artist to our program playlist...she is destined for stardom." *Jae'd Victor, Programme Director, NIU FM - New Zealand* ★ "Nikkole has the range and the potential to be the next big hit. She has a great old school soul, sultry sound and the listeners in this area love Nikkole!" *Denise Brooks, Director of Urban Programming, Clear Channel, WJKX/WZLD/WEEZ, Hattiesburg, MS*

So check out Nikkole's new cd, *Creolepatra* ...and decide for yourself ...it's guaranteed to make you a believer too!!!

## TRACK LISTING

1. E-X-OTIC
2. I Really Need You
3. Interlude: The Dream (LaLa)
4. Are You Satisfied?
5. As If You Were Mine
6. Wach-U-No
7. Love Was Made In Heaven
8. It Shoulda Been Me
9. Where I Was Meant To Be (Featuring David T. Walker)
10. Interlude: Are You Swept? (Featuring The Emotions)
11. Even On A Day Like This
12. Now Or Later (Rap by August)
13. Feel Me (Rap by J-Go)
14. I Can't Leave
15. Stressin'
16. Interlude: Imperfections
17. STOP

## TOOLS

Music Video for "E-X-OTIC"  
11 X 17 Album Posters  
Post Cards  
Flyers  
Stickers  
Media Giveaways

## PUBLICITY

National & International Magazine Interviews in *Billboard*, *Ebony*, *BRE* and many others.

National & International Radio and Television Interviews and Appearances

National Concert and Promotional Touring

Music by Nikkole is featured in Motion Picture Soundtracks and National Television and Radio Ad Campaigns

## RADIO

1st Single  
"E-X-OTIC"  
(Release Date:  
July 08, 2008)

Includes additional versions

Serviced to Urban, Urban AC, Rhythmic and Satellite Formats

Music Video serviced to BET, MTV, VH1, Blastro, YouTube, etc.

## INTERNET

Official Site:  
[www.Nikkole.com](http://www.Nikkole.com)

Myspace:  
[www.myspace.com/TheNikkoleNetwork](http://www.myspace.com/TheNikkoleNetwork)

Online Campaigns:  
iTunes, Yahoo Music, CD Baby, Amazon and most digital outlets!

## DISTRIBUTION



Available From:

SELECT-O-HITS  
Distributors Network  
1981 Fletcher Creek Drive  
Memphis, TN 38133

To Order Contact Your Local Sales Rep or Call:

Tel: 901.388.1190  
Fax: 901.388.1243

## BIOGRAPHY

Nikkole is an independent musician that has established herself as a true artist within the music world. She is a vibrant and universal Singer / Songwriter / Producer / Performer with a 5-Octave Range whose performance in the studio and on-stage is filled with Emotion and Excitement!!! In 2001, she released her debut CD entitled "Appearances". Her hard work resulted in a Best Pop Album award from Radio Free Virgin and JPF, for which she beat out 7800 other independently released albums. Her winning streak continued with another award from Radio Free Virgin and JPF with "Over It" being named one of the top 20 Best Pop Singles out of 25,000 independent successful songs in 2003. Nikkole further proved her success when she became the #1 independent singer in the US with her debut album via mp3.com. Following up and building upon the success of her first CD, Nikkole released a brand new full-length LP entitled "A Girl Like Me". The lead off single "It's Too Late" featured The Emotions and was added to medium or heavy rotation at over 60 commercial radio stations, including Clear Channel Stations in the U.S. and to numerous radio stations in the UK, the Netherlands, France, Italy, Germany, Japan, Australia, New Zealand, Fiji, Tonga and the Cook Islands. Nikkole has written and co-produced every single song on all three of her albums and her Christmas EP. She is also a voting member of the prestigious "Grammys", which is quite an honor especially for an independent recording artist. Nikkole was up for 3 Nominations in the following categories at the 50th Annual Grammy Awards: Best Urban / Alternative Performance (for "Breathe"), Best R&B Song (for "Breathe") and Best New Artist! Nikkole has worked with some of the world's top performers such as Babyface, The Emotions, Lakeside, The Commodores, Midnight Star, Gregory Hines, Whoopi Goldberg, Cedric the Entertainer, David T. Walker and Patrice Rushen. Nikkole collaborated with Norman Brown on the #1 Billboard smash "Stay With Me" (2007), more specifically the radio-friendly cut "You Keep Lifting Me Higher," which she not only sang, but she wrote and arranged the vocals. In fact, Nikkole spent 8 weeks at #1 on Billboard's Contemporary Jazz Charts with Norman Brown's, "Stay With Me" project. The album remained in Billboard's Top 10 for over 4 months! She has also appeared on many soundtracks and her song "Beautiful Colors" was selected for national television and radio ad campaigns for Mattress Firm, the largest mattress retailer in the United States. The success of Nikkole's recording career has also led to endorsements and or sponsorships with major companies such as: Smashbox Cosmetics, Nine West, Sergio Valente, Joe's Jeans, Seychelles Footwear and the list goes on. Nikkole has been featured in several magazines such as *Ebony Magazine*, *BRE (Black Renaissance Exclusive)*, *Ironman Japan*, *MediaSearch Magazine of Australia*, *InMag, L.A.'s The Place* and *Riveting Riffs* and this is addition to numerous newspaper articles and regional magazine reviews of Nikkole's recordings and concerts. With so much on the horizon, Nikkole will continue to develop her proficiency as a singer-songwriter, and producer so that she can remain a musical talent who is always at the top of her game. Now it is time to feast your heart, your soul and your ears on the bounty of "Creolepatra" the brand new full-length album from Nikkole! "Creolepatra" is a musical journey from the heights of Ecstasy to the ultimate depths of Love. Dare to be "E-X-OTIC" and enjoy the ride!



SE ENTERTAINMENT RECORDS

Record Company  
[www.seeinc.tv](http://www.seeinc.tv)

WHAM ASSOCIATES

Management  
Tel: 323 465 5900

ARTIST / TITLE: NIKKOLE / CREOLEPATRA

RELEASE DATE: 08/12/08

FILE UNDER: POP / R&B



UPC: 805697101098  
SRP \$12.98

CATALOG ITEM:  
SEER 10109

SE ENTERTAINMENT RECORDS



NOTES:

5% DISCOUNT  
ON INITIAL ORDERS